



# Brainport Eindhoven Europe's top technology region

Expertise, networks and talent  
clustered on five campuses



**BRAINPORT  
EINDHOVEN**

# Brainport Eindhoven,

## #1 top technology region

Brainport Eindhoven, situated in the south of the Netherlands, is Europe's most innovative technology region. In Brainport the smartest minds and most skilled workers collaborate on developing innovations that make our future better, safer and cleaner. The region is known for its innovative strength and multi-disciplinary way of working. Companies and organizations excel at inventing, developing and integrating world's most complex high-tech machines, systems, components and products at utmost precision and with unprecedented accuracy. Brainport Eindhoven has the world's highest patent density per capita and above average private R&D expenditure.

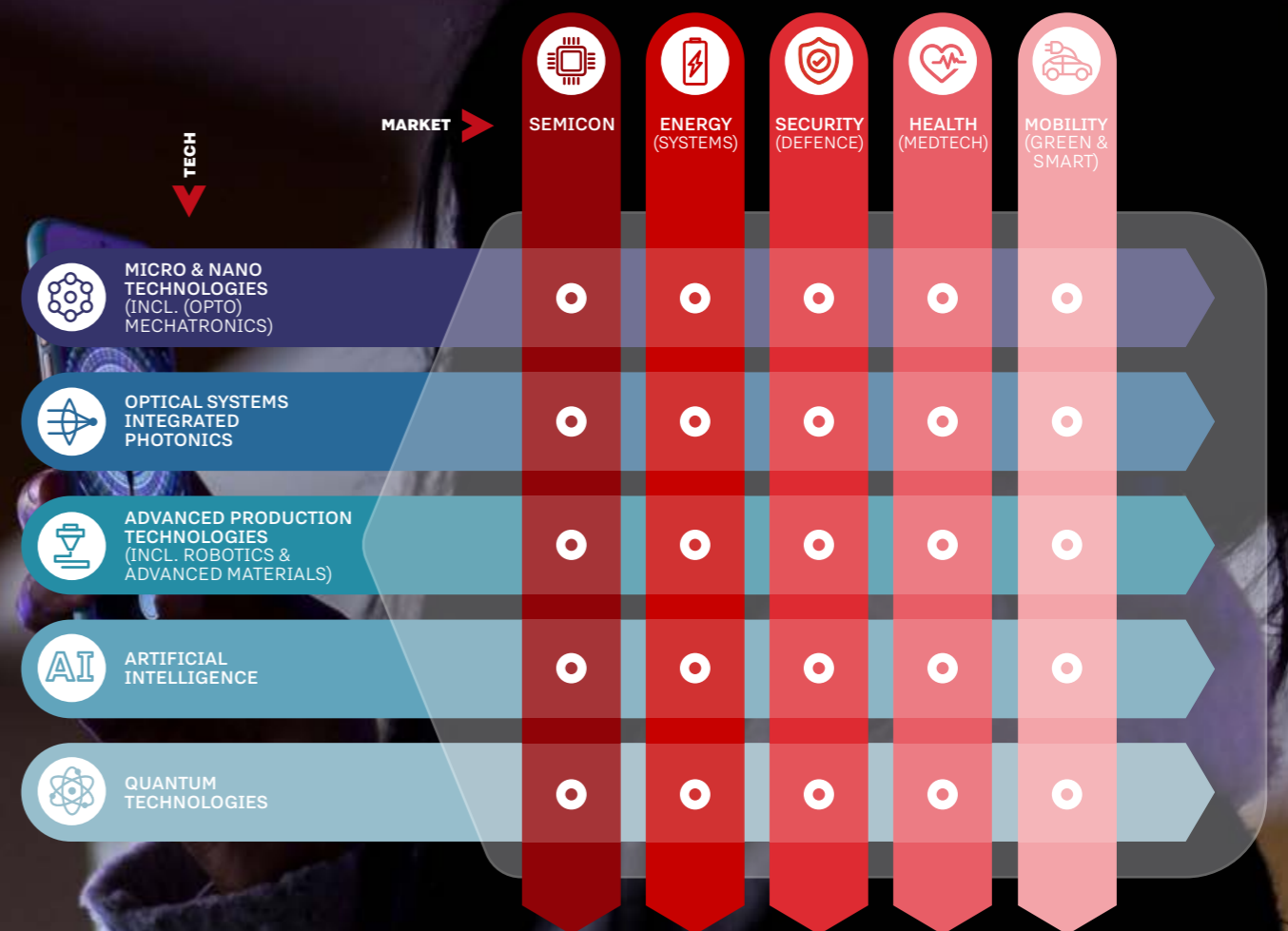
When working together, there are no boundaries. Companies in all sorts and sizes, knowledge- and educational institutes and governmental organizations are connected when it comes to realizing ambitions through technological innovation. They help each other discover, grow and move forward while achieving the seemingly impossible.

By choosing for Brainport Eindhoven for your business you join a complete and unique technology ecosystem that consists of OEM's, SME's, suppliers, contract manufacturers and knowledge institutes that cooperate closely and have access to physical and fiscal facilities for cost-efficient development. Because of this joint innovation companies in Brainport market their products, parts or systems within a considerably shorter period of time at competitive costs.

### Key-technologies and markets

Brainport's unique high-tech competences and strong cooperation between industry, educational and knowledge institutes and governments, have turned the region into what it is today. A prosperous region where breakthrough technologies are developed that shape tomorrow's society. Collaboration continues to be the main recipe for the future. Together, companies and organizations ambitiously work on enriching and strengthening the region. Targeted investments in and development of key-technologies and markets are essential in maintaining Brainport's leading global technological position.

On the next page you'll find an overview of the key-technologies and markets of Brainport Eindhoven.



### World-class Systems Engineering and Design

Thinking as a starting base companies in Brainport Eindhoven are able to develop unique solutions for the most complex challenges in high-tech markets due to strong competences in Systems Engineering and Design Thinking. Because of the heritage of Philips - developing complex machines in open environments - companies and people in Brainport Eindhoven nowadays excel in collaboration and multi-disciplinary thinking. Global OEMs like ASML, NXP, Thermo Fisher Scientific, VDL, Philips and Additive Industries, value-added suppliers and world-renowned institutes like the Eindhoven University of Technology (TU/e) and the Holst Centre are taking a multidisciplinary approach to design solutions for global challenges. The open innovation environment that is facilitated on campuses enhances these solutions through the proximity of different types of people, teams and companies. By bringing together different disciplines, combined with a systematic way of working in developing a product, system or process, Brainport Eindhoven offers an ecosystem where new technologies and solutions for complex challenges are successfully brought to market.

### Open innovation and co-creation on and between campuses

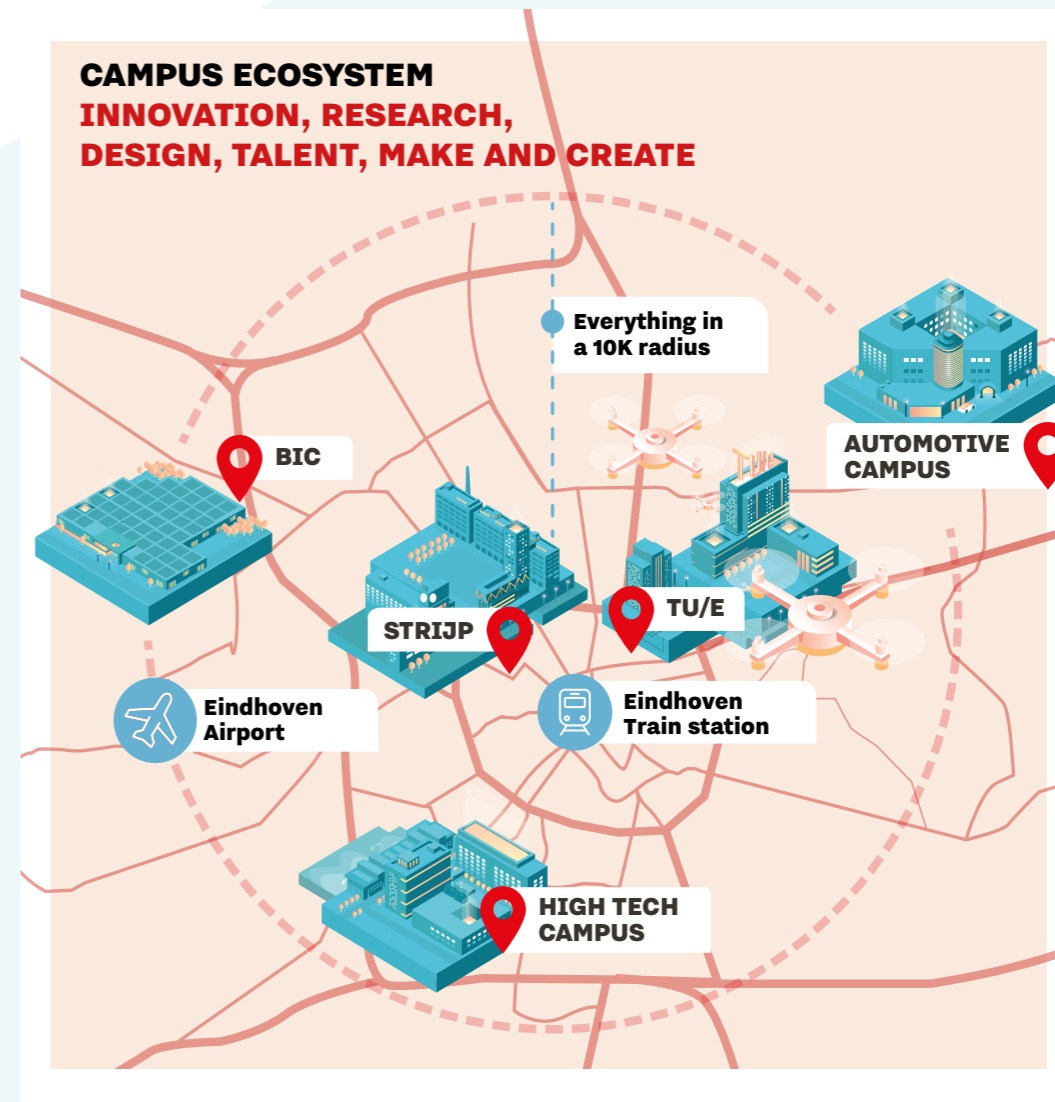
In Brainport Eindhoven technologies and networks are clustered on five campuses in order to create economic value and facilitate business development. Each of these campuses houses an ideal mix of companies, talents and educational and knowledge institutes each with a specific expertise. They collaborate on inventing, developing and producing tomorrow's technologies. At the campuses knowledge, experience, world-class research facilities and technical infrastructure are shared in an open innovation setting. Collaboration and spontaneous and orchestrated meetings are stimulated by events, social activities and more.

### Collaboration and crosspollination on and between campuses

All campuses are located in a relatively compact geographical area and together they form a value chain that covers all technology readiness levels. The campuses work together to actively enhance Brainport Eindhoven's business climate. By creating an excellent physical infrastructure and offering efficient public transport between the campuses and main transportation hubs crosspollination, collaboration and co-creation happen in a spontaneous way. Sharing knowledge leads to multiplying knowledge.

### Campuses accelerate the development process and speed up time to market

Through the different technology readiness levels, the campuses form a value chain which supports companies in their growth. As each of the campuses has its own focus areas and expertise, the value chain enables companies to go through the process from idea at the drawing table to marketing and manufacturing their products within an unparalleled amount of time. The region offers companies and organizations all ingredients needed for turning bright ideas into value for business and society. Moreover, the campuses support the various phases of growth that a technology company goes through. Start-ups find an ideal environment on the TU/e Campus where there is lots of support for companies that want to turn science into technology, because of the synergy between research, knowledge and business development. Companies that are in the scaling-up phase can find excellent housing on either the High Tech Campus Eindhoven, Strijp District or Automotive Campus. Each of these campuses offers access to valuable networks, shared facilities and best-in class talent. When it comes to expanding production and looking for access to top manufacturing technologies, Brainport Industries Campus is the place to be.



### Access to an exceptional (future) talent pool

Building a winning business is all about having access to exceptional talent. At the campuses a (future) talent pool is always within reach. At High Tech Campus Eindhoven alone, one finds over 12,000 highly qualified people who are best-in-class in their field. Another 50,000 high-tech professionals work on the other campuses or in the near vicinity. Moreover, most of the campuses cooperate with or house educational institutes at all levels varying from vocational education to university level. Take the Automotive Campus in Helmond for example, where over 700 automotive students learn and put their knowledge into practice.

The presence of educational institutes on the campuses leads to continuous high-tech educational curricula and cross-pollination between education and industry. The industry helps defining the curricula, in order to educate the talent that is needed in the industry. The educational institutes provide an ongoing flow of interns and highly skilled professionals for the companies on the campuses and the region. These professionals have the mindset of Brainport: working multidisciplinary with open innovation in mind. Established companies and young talent challenge each other to come up with boundless ideas by out of the box thinking.

# Five unique campuses

## TU/e Campus Education and innovation

The beating heart of TU/e Campus is Eindhoven University of Technology (TU/e), a world class university known for its research collaborations with the top 500 innovative companies globally and its high number of co-publications with industry (Times Higher Education World University Ranking, 2017 and CWTS Leiden Ranking, 2019). TU/e campus offers a unique mix of young talents, innovative knowledge and research institutes and high-tech companies. It is where science meets business.



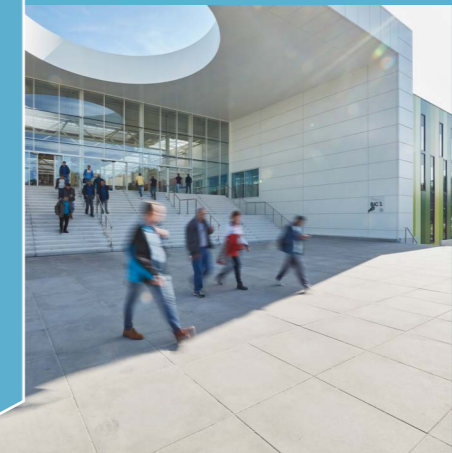
## High Tech Campus Eindhoven Homebase for breakthrough technology and innovation

High Tech Campus Eindhoven is the smartest km<sup>2</sup> in the Netherlands with more than 300 companies, startups and institutes. Some 12,500 researchers, developers and entrepreneurs work on developing breakthrough technologies and products. Focus areas of HTCE are Semicon & Integrated Photonics, Health & Medtech, Energy & Cleantech, Software & AI. The ecosystem of open innovation helps campus-based companies to accelerate innovation, by offering easy access to high tech facilities and international networks.



## Brainport Industries Campus Sustainable, advanced manufacturing

Brainport Industries Campus is where the innovative and competitive force of high-tech and deep-tech manufacturing is accelerated. Brainport Industries Campus is the first location in the world where high-tech suppliers not only produce but also innovate together while sharing knowledge and valuable facilities such as flexible production areas, warehouses but also offices. The campus is ideal for technical suppliers in the high-tech and deep-tech manufacturing industry who want to do business and innovate and produce together.



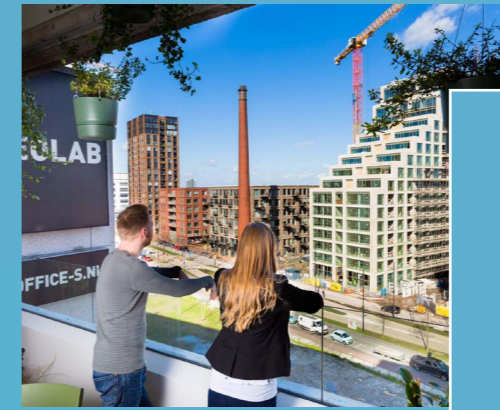
## Automotive Campus Powering mobility innovations

Automotive Campus in Helmond is the national and international hub for smart, safe and sustainable mobility and energy solutions. With a strong focus on open innovation and collaboration, it's the place where industry leaders, researchers, students and entrepreneurs come together to shape the future of mobility, electrification, digitalization and decarbonization.

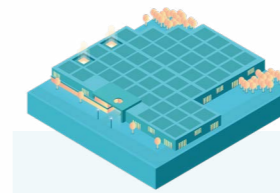


## Strijp District Where creativity, technology and innovation come together

The Strijp District is the vibrant creative heart of Brainport Eindhoven. Situated on the former Philips industrial grounds, it has evolved into a dynamic urban area where design, technology, entrepreneurship, culture and education seamlessly intersect. It is a district where working, living, learning and leisure thrive side by side — a breeding ground for new ideas, bold concepts and thriving business activity.



# Campuses overview



CAMPUSES	TU/E	HTCE	AUTOMOTIVE CAMPUS	BIC	STRJP-S&T
Area in m2	750.000	1.010.000	300.000	758.000	270.000
Development space	200.000	100.000	120.000	225.000	295.000
Lettable floor space	300.000	300.000	32.000		
Total number of companies	157	300+	60+	50	1.000+
Startup companies	90	100+		5	250+
Jobs	8.300	12.000	900	1.750	10.000
Students	20.000	-	700	-	2.500
Distance to EHV Airport	10 km	10 km	20 km	1 km	8 km
Residents	1500 students	-	-	-	2.500
<b>FOCUS AREA'S</b>					
Digital & Deep Tech	●	●	●		
Advanced Manufacturing & Industrial Systems	●			●	
Energy & Cleantech Systems	●	●	●		
Health & Life Sciences	●	●			
Smart Systems & Built environment	●		●		●
Creative & Experience Economy					●
Innovation & Ecosystem Development			●		●

## Campus 1

# Eindhoven University of Technology TU/e Campus Education and innovation

Eindhoven University of Technology (TU/e) is a leading institution in science and technology, recognised internationally for its forward-looking role in addressing global societal challenges. TU/e educates the engineers of the future, professionals who combine deep technological expertise with the ability to create meaningful impact.

The TU/e Campus functions as both a physical and virtual living lab, connecting people, ideas and industries. Home to more than 150 businesses and welcoming over 15,000 people daily, it offers an open and vibrant environment where academic excellence and entrepreneurial activity come together. Located in the heart of Brainport Eindhoven, the campus stands out for its strong collaboration with advanced industries, forming a thriving ecosystem dedicated to improving quality of life through sustainable innovation.

### Vision and strategy

TU/e Campus is a place of national significance and international appeal, providing state-of-the-art facilities that support R&D-driven companies and start-ups. The campus encourages open, multidisciplinary innovation and collaborates closely with universities, scientific institutes, government, social organisations and industry. Its ambition is to foster an ecosystem where

SMEs and global enterprises can collaborate sustainably. When research outcomes are adopted by industry and developed into real products, knowledge gains real value—an area in which TU/e excels. The university remains a world leader in industry collaboration, with almost 16% of its publications co-authored with industrial partners, according to the CWTS Leiden Ranking 2019.

### Focus areas

- Energy technologies
- Health technologies
- Semiconductor and digital technologies
- Advanced materials

### Driving sustainability transitions

By 2030, TU/e aims to lead the change for a better world by driving impactful, sustainable innovation in the Brainport ecosystem and beyond. TU/e commits to being a strong partner for sustainability transformations, focusing on energy, health, digital, and materials transitions, and embedding sustainability in research, education, valorisation and campus operations. TU/e is among the first universities to sign the “Think Green, Act Green” manifesto (initiated by the Green Young Academy), an extra commitment to our enduring journey towards a sustainable footprint. TU/e uses its campus as a living lab for innovation, a testbed for sustainable solutions – driving transitions that matter for society and industry. Want to know more: TUe Sustainability Visioning Report.

### Main objectives

TU/e is frontrunner in implementing a structured monitoring and CSRD-aligned

reporting, ensuring transparency and measurable progress. An important part of our reporting is calculating our CO2 footprint (scope 1,2,3). TU/e campus operations is developing and implementing a roadmap ‘Sustainable Campus’. By 2030, the campus strives to a 55% CO2 reduction for energy compared to 2005. Circularity is embedded in our buildings, procurement and daily processes and services. In our catering we are making a shift towards more plant-based menus. The campus is developed as a green oasis rich in native flora and fauna, supporting clean air, healthy soil and attractive social spaces. A vibrant campus culture is promoted, centred on well-being, compassion, equity and an active lifestyle. In our newest campus developments, such as the cleanroom and Area 19, we are actively implementing our roadmap.

### Remarkable sustainability achievements

The campus energy footprint reduced significantly through buying 100% renewable electricity and one of Europe’s largest heat-exchange (ATES) systems. In 2025 TU/e launched GENIUS, a smart energy hub with battery storage and EV integration to tackle grid congestion. Moreover, TU/e ranks as the number 1 university in the SustainaBul 2025 award.



## LAB FACILITIES

### Center for Multiscale Electron Microscopy

CMEM houses state-of-the-art EM instrumentation ideally suited for cryo, in-situ & 3D studies of molecules, materials, and processes across multiple length scales. We are part of the Netherlands Electron Microscopy Infrastructure (NEMI) and the Flagship node for our competences. Our facilities are used by academic partners in the Netherlands and abroad, as well as by industrial parties such as Covestro, AkzoNobel, DSM, Shell, Nouryon, SABIC, Clariant, FujiFilm.

<https://www.tue.nl/en/research/research-labs/center-for-multiscale-electron-microscopy>

#### Contact

Heiner Friedrich  
[cmem@tue.nl](mailto:cmem@tue.nl)

### Future Energy Lab

In the Future Energy Lab scientists are researching green fuels and cleaner combustion methods for engines.

<https://www.tue.nl/en/research/research-labs/future-energy-lab>

#### Contact

Niels Deen / David Smeulders  
[n.g.deen@tue.nl](mailto:n.g.deen@tue.nl)  
[d.m.j.smeulders@tue.nl](mailto:d.m.j.smeulders@tue.nl)

### High Capacity Optical Transmission Lab

The High Capacity Optical Transmission Lab facilitates research on innovative optical fibers and signal processing techniques to enable transmission of ultra-high capacity. The TU/e scientists working within the Electro-Optical Communications Group cooperate in the laboratory with various universities and research institutions located both within and beyond the Netherlands.

<https://www.tue.nl/en/research/research-labs/high-capacity-optical-transmission-lab>

#### Contact

Chigo Okonkwo via [cokonkwo@tue.nl](mailto:cokonkwo@tue.nl)

### Laboratory for Biomechanics

The Laboratory for Biomechanics provides advanced systems for the characterization of both soft and hard biological tissues and biomaterials, developing novel cell culture platforms, and investigating mechanobiology behaviours. The Laboratory for Biomechanics is a state-of-the-art research facility dedicated to advancing knowledge in Regenerative Medicine and Mechanobiology within the Department of Biomedical Engineering, TU/e. Our laboratory is equipped with a wide range of cutting-edge experimental setups and testing devices, supporting both fundamental and translational research.

<https://www.tue.nl/en/research/research-labs/laboratory-for-biomechanics>

#### Contact

Gabriele Addario / Mascha Maenhout - van Haag  
[G.Addario@tue.nl](mailto:G.Addario@tue.nl)  
[M.Maenhout.vanHaag@tue.nl](mailto:M.Maenhout.vanHaag@tue.nl)

### Laboratory of Cardiovascular and respiratory Biomechanics

The Laboratory for Cardiovascular & Respiratory Biomechanics, in short Cardio lab, hosts a variety of equipment and experimental setups to facilitate the ongoing research in the field of cardiovascular & respiratory biomechanics of the department of department of Biomedical Engineering.

<https://www.tue.nl/en/research/research-labs/laboratory-of-cardiovascular-and-respiratory-biomechanics>

#### Contact

Marcel Rutten / Mascha Maenhout - van Haag  
[M.C.M.Rutten@tue.nl](mailto:M.C.M.Rutten@tue.nl)  
[M.Maenhout.vanHaag@tue.nl](mailto:M.Maenhout.vanHaag@tue.nl)

### Microfab/Lab

The Microfab/Lab facilitates the development of new micromanufacturing technologies for use in life sciences applications. Many research institutions have a production facility that specializes in a single technology. Here, by contrast, various technologies are present at a single location, ranging from a cleanroom for lithography to sophisticated 3D printers, and from laser manufacturing to a room designed for working with biological cells. This combination makes the Microfab/Lab unique and enables an otherwise difficult feature: combining technical manufacturing processes with biochemical steps.

<https://www.tue.nl/en/research/research-labs/microfablab>

#### Contact

Irene Dobbelaer  
[i.j.m.Dobbelaer@tue.nl](mailto:i.j.m.Dobbelaer@tue.nl)

### Multiscale Lab

The Multiscale Lab facilitates research on the micro-mechanical deformation and failure behavior of a broad class of (innovative) materials and material systems. The Multiscale Lab is a unique lab. The lab is bridging the gap between materials science and mechanical testing, between modeling and experimentation across the scales and between quantitative testing and in-situ microscopic mechanical testing.

<https://www.tue.nl/en/research/research-labs/multiscale-lab>

#### Contact

Johan Hoefnagels  
[J.P.M.hoefnagels@tue.nl](mailto:J.P.M.hoefnagels@tue.nl)

### NanoAccess

NanoAccess makes it possible to produce, process and analyze innovative materials with nanometer accuracy, without releasing the necessary vacuum. Research at the nanoscale becomes much more efficient and accurate with this approach. What's more, the facility offers further possibilities for producing all kinds of new structures. Energy-efficient electronics and memory storage units, sensors for smart cars, microchips based on light signals and new materials for, say, energy storage and solar cells are all closer to being developed thanks to research conducted using NanoAccess.

<https://www.tue.nl/en/research/research-labs/nanoaccess>

#### Contact

Reinoud Lavrijsen  
[r.lavrijsen@tue.nl](mailto:r.lavrijsen@tue.nl)

### PULS/e

The Photoacoustics & Ultrasound Laboratory Eindhoven (PULS/e) is a state-of-the-art research facility at TU/e dedicated to advancing ultrasound and photoacoustic imaging technologies. Our mission is to develop and clinically translate novel imaging techniques that support early diagnosis, personalized treatment planning, and continuous monitoring of disease—ultimately improving patient outcomes and reducing healthcare costs. We focus on radiation-free, non-invasive, and cost-effective imaging solutions that are scalable from tertiary hospitals to primary care settings.

<https://www.tue.nl/en/research/research-labs/pulse>

#### Contact

Richard Lopata  
[R.Lopata@tue.nl](mailto:R.Lopata@tue.nl)  
Mascha Maenhout - van Haag  
[M.Maenhout.vanHaag@tue.nl](mailto:M.Maenhout.vanHaag@tue.nl)

## SolarLab

With the facilities of the SolarLab, atomic layers can be applied to solar cells, in a quick, controlled manner, making solar cells even more efficient. Solar cells comprise various extremely thin layers of materials, each with its own job to do. Together they ensure that sunlight is converted into electricity as efficiently as possible, and that energy loss is minimized. To make solar cells even more efficient, scientists search ceaselessly for new materials and innovative ways of making these nanolayers. The SolarLab facilitates this research by providing state-of-the-art instruments.

<https://www.tue.nl/en/research/research-labs/solarlab>

### Contact

Erwin Kessels  
W.M.M.Kessels@tue.nl

## TU/e Supercomputing Center

The TU/e Supercomputing Center helps researchers perform large-scale computations quickly and efficiently by providing consulting, hands-on support, and access to the most suitable computing infrastructure. Because different workloads require different environments—such as AI training versus multiscale simulations—the centre does not operate one single supercomputer. Instead, it advises on the best solution for each project, assists with code optimisation, and removes technical or administrative barriers. The centre's goal is to match every workload with the most effective and accessible computational resource.

<https://www.tue.nl/en/research/research-labs/supercomputing-center>

### Contact

Han Verbiesen  
supercomputing@tue.nl

## Other labs

In addition to these laboratories, TU/e hosts many other research labs. An overview can be found on our website

[www.tue.nl](http://www.tue.nl) > Research > Research Labs



## EINDHOVEN UNIVERSITY OF TECHNOLOGY (TU/E CAMPUS)

### FACTS & FIGURES

Area in m2:

**750,000**

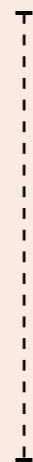
Development space in m2

**200,000**

Lettable floor space in m2

**300,000**

**Total number of companies: 157**



#### HIGH-PROFILE COMPANIES:

GE Healthcare, Ioniqa, Preceyes, Xeltis, TUSTI, STENTiT, Angiogenesis Analytics, Hybrid Catalysis, Level Acoustics & Vibration, Cellcius BV, Helia Biomonitoring BV, Taylor Technologies BV.



**90**  
**STARTUP**  
COMPANIES



**13,000+** TU/e  
**STUDENTS**



**SME 50**  
COMPANIES



**7,280** FONTYS & SUMMA  
**STUDENTS**



**8,300 JOBS**  
ON CAMPUS



**17 LARGE**  
ENTERPRISES



#### PROMISING STARTUPS:

ARTIC Technologies B.V., ANTENNEX, Dxcrete, Firefly Sensing, MantiSpectra, MicroAlign, ShanX Medtech, UpyTher, FABBS – Student startup, RIFT – Student startup, AquaWomb



#### KNOWLEDGE INSTITUTES:

DIFFER, Institute for Complex Molecular Systems (ICMS), Institute for Photonic Integration, High Tech Systems Center, Data Science Center, GE Healthcare, Eindhoven Engine, Eindhoven Artificial Intelligence Systems Institute (EAISI), Eindhoven Institute for Renewable Energy Systems (EIRES)

### Startup/scale-up Facilities & Programmes

TU/e's Knowledge Transfer Office (KTO) is a cornerstone of the university's innovation ecosystem. It serves as the central hub for technology transfer, overseeing intellectual property management and driving business development and incubation. Through tailored support, KTO empowers students and researchers to unlock their entrepreneurial potential, helping them explore opportunities, refine ideas, and take the first steps toward building successful ventures. In close collaboration with TU/e Participations, the university's holding company, TU/e's KTO amplifies impact and strengthens the broader innovation landscape.

Moreover, as one of the six founding partners of The Gate, TU/e collaborates with BOM, Brainport Development, Fontys, Summa, and the Municipality of Eindhoven to accelerate early-stage startups in the Brainport region. Located at TU/e Campus, The Gate offers an incubator program and hosts monthly walk-in hours, where aspiring entrepreneurs can access expert advice on intellectual property, funding strategies, legal matters, and other critical aspects of business development. Its annual flagship event, LEVEL UP, helps startups gain momentum and scale to the next level.

Another key initiative is TU/e innovation Space, a unique community and facility supporting hands-on, interdisciplinary education and entrepreneurial development. It provides a rich

learning environment offering students diverse learning opportunities. It supports students addressing complex societal and industrial challenges, design and build prototypes, and develop innovations alongside researchers, industry and other external partners and fellow students. The approach nurtures creativity, collaboration and a mindset geared towards sustainable, practical impact.

Students who want to develop their entrepreneurial competencies can participate in the annual TU/e Contest that offers students the opportunity to develop their ideas, prototypes or research results into viable concepts that can make a real impact, supported by industry experts and campus mentors. The contest has become a proven stepping stone for many start-ups emerging from the university.

Student Teams also occupy a special place within TU/e's entrepreneurial landscape. Regarded as unique learning environments, these teams enable entrepreneurial students to develop both technical expertise and organisational skills. Their research and development efforts regularly create valuable impact for companies, and their collaborative, challenge-driven approach is recognised as distinctive on the global stage.

Through these facilities and programmes, TU/e Campus fosters an ecosystem where innovation thrives, entrepreneurial talent grows, and ideas evolve into solutions that benefit society and industry alike.





## Sports and leisure facilities

**44,000 m<sup>2</sup>**

The Student Sports Centre offers 70 sports including fitness, indoor pool, outdoor tennis courts, football and hockey fields. Cultural facilities include dance, theater, music, expositions, movies and readings.



## Parking facilities

**2,000** Car parking spaces, paid  
**11,000** Bicycle parking places



## Digital infrastructure

**Park broadband and Wi-fi, Service available**



## Housing facilities **1500**

Almost 1500 (student)apartments located on Campus.



## Distance to Eindhoven Airport: **10km**

Bus 400 or 401 in 20 min to Eindhoven Central Station + 8 min walking



## Other facilities

Library for students, several F&B accommodations, car rental, hair salon, daycare center, employment agency, supermarkets, student and cultural associations.

## Contact details

### Website

[www.tue.nl](http://www.tue.nl)

### Contact person

Yvette Ramakers  
(Unitmanager Integrated Campus Strategy)

### Phone number

+31 40 247 2775

### Email address

[y.j.l.ramakers@tue.nl](mailto:y.j.l.ramakers@tue.nl)



## Campus 2

# High Tech Campus Eindhoven

## Turning Technology into Business

High Tech Campus Eindhoven (HTCE) is recognised as the smartest square kilometre in the Netherlands. Home to more than 300 companies, start-ups and research institutes, the campus brings together some 12,500 researchers, developers and entrepreneurs who work daily on breakthrough technologies and impactful products. Its thriving ecosystem of open innovation enables companies to accelerate development by providing easy access to advanced facilities, shared expertise and strong international networks. With a clear focus on deep tech and future-defining technologies, HTCE is a place where ideas grow into cutting-edge solutions for global challenges.

### Vision and strategy

HTCE is committed to offering an adaptable and future-proof environment that meets the diverse technical needs of innovative companies. The campus provides a broad range of spaces, including chemical and biosafety laboratories, cleanrooms, industrial halls and office environments, supported by advanced utilities, logistics facilities and flexible infrastructure. Its sustainable geothermal energy system ensures a reliable supply of heating and cooling for growing businesses seeking to innovate responsibly.

HTCE also facilitates small-scale and pilot production, giving companies the freedom to test, refine and scale their technologies efficiently. By continuously evolving its facilities and services, the campus ensures alignment with current industry demands and the innovations of tomorrow.

### Focus areas

- Semicon & Integrated Photonics
- Health & Medtech
- Energy & Cleantech
- Software & AI



### Sustainability goals & results

High Tech Campus Eindhoven (HTCE) combines cutting-edge innovation with a strong commitment to environmental responsibility. Its green, park-like landscape creates an attractive working environment while reflecting the campus' long-standing focus on sustainable and nature-friendly business practices. Since its establishment, HTCE has actively collaborated with environmental organisations, national authorities and specialist partners to promote responsible behaviour and support long-term ecological stewardship across the campus.

### Main objectives

HTCE manages its landscape using ecological methods, ensuring the preservation and enhancement of local biodiversity. Sustainability is embedded into the campus design from the ground up, with energy as a central element in planning and development. The campus aims to increase the share of 'green travellers' by encouraging sustainable

mobility choices, while actively engaging the community in the creation of future-proof technological solutions. Together, these objectives form a cohesive approach to shaping a campus that is both innovative and environmentally conscious.

### Remarkable sustainability achievements

HTCE operates a large-scale heat exchange system, reducing energy consumption across the campus. Car parks are equipped with LED lighting, and the real estate portfolio is developed with sustainability principles at its core. The campus hosts the highest density of e-charging points in the Netherlands and supports green mobility through the introduction of 125 campus bikes. Additional initiatives, such as the Campus Community Garden and the use of cows and sheep for natural grass maintenance, contribute to a healthier ecosystem and a more sustainable campus environment.

## Open innovation services:

High Tech Campus Eindhoven offers a comprehensive portfolio of open innovation services that support companies across the entire innovation lifecycle, from research and prototyping to validation, production and scaling.

Visit <https://hightechcampus.com/facilities-and-services> for a comprehensive overview.

## Eurofins Material Analysis Lab

The Eurofins Material Analysis Lab specializes in advanced materials analysis and reliability investigation for high-tech materials and products. The lab provides chemical and physical material analysis, analytical test design, contamination control for high-tech manufacturing environments, chemical compatibility assessments, material reliability and failure analysis, corrosion testing, and extensive glass characterization, including optical, thermal and structural properties.

## Eurofins Reliability Lab

The Eurofins Reliability Lab delivers comprehensive reliability and lifetime testing services, including environmental simulations, Highly Accelerated Lifetime Testing (HALT), mechanical testing and permeability testing. The lab develops tailor-made test plans and works closely with the Material Analysis Lab to offer integrated failure analysis solutions that reduce time-to-market and mitigate product recall risks.

## Enginio Prototyping

Enginio supports mechanical designers and engineers with development and consulting services, prototyping and production of parts

in small and large volumes, tooling production, and manufacturing of machine components. The service focuses on practical, manufacturable solutions for projects of any complexity.

## Signify Electromagnetic Compatibility & Wireless Connectivity Lab

Signify's EMC & Wireless Connectivity Lab provides compliance testing and certification support according to international standards such as EN, CISPR, FCC, IEC and ETSI. The lab supports CE marking for products including lighting systems, wireless devices (e.g. NFC, Bluetooth, Zigbee, RFID, WiFi, NB-IoT), multimedia and IT equipment, and household appliances.

## Smart Biomaterials Consortium Pilot Production Facility

The Smart BioMaterials Consortium operates a pilot production facility for biomedical and regenerative medicine applications. The facility includes multiple GMP-C certified cleanrooms, shared quality control laboratories, office space and storage areas. It is designed to support startups and companies in scaling up smart biomaterials and life sciences innovations to meet clinical requirements.

## Philips Instrumentation Service

The Philips Instrumentation Service provides calibration, maintenance, repair and expert advice for electrical and measurement instruments such as oscilloscopes and microscopes. The service ensures accurate and reliable instrumentation throughout R&D and production processes and is available exclusively to HTCE residents.

## Vention

Vention enables companies to develop smart, connected products efficiently through its

modular Wockel® platform. The company specializes in modular product design, embedded electronics and software development, sensor and actuator integration, connectivity solutions, rapid prototyping and full-scale production.

## 3T Electronics & Embedded Systems

3T Electronics & Embedded Systems supports electronics and embedded system development from functional prototypes to volume production. Services include new product introduction, design for manufacturability and testing, supply chain management, inspection and quality control. Post-production, 3T supports lifecycle management, cost optimization, innovation, knowledge retention and failure analysis.

## HTCE Data Centre Facility

The HTCE Data Centre Facility offers campus residents a secure, energy-efficient and high-quality data center with flexible rack space for servers and storage. The facility provides fully redundant power and network infrastructure, ultra-fast connectivity up to 10 GB/sec, 24/7 access control and optional private cages for enhanced security requirements.

## Knowledge institutes, innovation hubs and ecosystem partners

High Tech Campus Eindhoven also hosts a strong network of R&D centers, innovation hubs and knowledge institutes that strengthen collaboration between industry, research and government:

- TNO and Holst Centre Labs (in cooperation with imec): Applied research in micro electronics, wireless technologies and integrated systems.

- XIVER MEMS Foundry: Development and production of MEMS (Micro-Electro-Mechanical Systems).
- PhotonDelta: National ecosystem for integrated photonics research, development and industrialization.
- Solliance: Research initiative focused on thin-film solar energy technologies.
- HighTechXL and DeepTechXL: Accelerator and venture-building programs for high-tech and deep-tech startups.
- Fontys: University of Applied Sciences focused on education, applied research and industry collaboration.
- High Tech NL: Network organization representing the Dutch high-tech manufacturing industry.
- Ministry of Defence: Innovation and R&D activities related to advanced technologies.
- Innovation Industries: Deep-tech venture capital fund investing in breakthrough technologies with societal impact.
- AI Innovation Center: Facilitates adoption and application of artificial intelligence through education, ecosystem development and project support.
- NXTGEN Hightech: National Growth Fund program accelerating next-generation high-tech manufacturing technologies.
- RVO (Netherlands Enterprise Agency): Supports entrepreneurship, innovation, subsidies and financing.
- PyData: Community and knowledge platform for data science, Python and AI.
- 3EALITY Innovation Hub: Innovation hub for Spatial Computing and Digital Twin technologies, including AR/VR.
- CUREON Innovation Center: Innovation center focused on medical technology and biotechnology.
- Drone Hub: Facility supporting development and application of drone and autonomous aviation technologies.

## Startup/scale-up facilities & programmes

High Tech Campus Eindhoven (HTCE) is home to more than 100 promising start-ups, including Axelera AI, Euclid, FononTech, SMART Photonics, EFFECT Photonics, Carbon, Keiron and InPhocal. The campus has long been recognised as an ideal location for scaling high-tech ventures, supported by a strong innovation ecosystem and direct access to world-class technology partners.

A central element of this support is **High Tech Plaza**, designed specifically to meet the needs of early-stage and fast-growing companies. Offering flexible office and laboratory space under favourable conditions, including essential power utilities, free parking, Wi-Fi and high-speed web access, High Tech Plaza enables start-ups to focus their resources on scaling their business. By operating within the broader ecosystem of leading deep-tech companies, founders can accelerate development while “standing on the shoulders of giants”.

HTCE is also home to several major venture-building and acceleration initiatives. **HighTechXL**, launched in 2015, has evolved from a high-tech accelerator into a deep-tech venture-building programme. With more than 60% of alumni still active, it plays a significant role in Eindhoven's innovation landscape.

**LUMO Labs** offers a two-year venture builder programme with pre-seed and seed funding, supporting start-ups in AI, data, blockchain, IoT, AR/VR and digital security. Its ecosystem-driven approach shortens both time-to-market and time-to-follow-up funding.

**Innovation Industries**, a leading Dutch deep-tech venture capital firm, complements this ecosystem by investing in companies that address fundamental global challenges and contribute to ESG objectives.

HTCE also hosts specialised innovation hubs that help start-ups access emerging markets. **3EALITY** serves as the campus hub for spatial computing and digital twin technologies, fostering an ecosystem around virtual and augmented reality, web3, blockchain and IoT. It provides workspace, events and match-making to accelerate adoption of 3D Internet technologies.

The **AI Innovation Center**, co-founded by Philips, Signify, NXP and ASML, drives the application of artificial intelligence across the Brainport region through education, ecosystem building and project support. In addition, the **Workplace Vitality Hub**, initiated by Fontys, imec, TU/e and TNO, advances innovation in workplace vitality, an area of growing importance for modern businesses.

Together, these facilities and programmes make High Tech Campus Eindhoven one of Europe's most dynamic environments for building and scaling deep-tech companies.

### Sustainable energy

- Water supply, 100% green electricity, and gas.
- Over 11,000 solar panels campus wide
- Over 95% of the buildings have energy labels varying between A and A+++++
- 220 EV loading stations
- ATEs (Aquifer Thermal Energy Storage) for heating and cooling.

### Essential workplace facilities

- Direct public transport connections to Central Railway Station and Airport, via 4 on-campus bus stops
- Excellent accessibility by car with direct highway exit. Ample of free parking spaces available in our open-entry parking facilities
- Sewer, drainage, and waste management.
- Interior planting and building maintenance.
- Cleaning of general areas.



## HIGH TECH CAMPUS EINDHOVEN

Homebase for breakthrough technology and innovation

# FACTS & FIGURES

Area in m2:

**1,010,000**

Development  
floor space in m2

**100,000**

Lettable floor space in m2

**300,000**

Total number  
of companies:

**300+**



### HIGH-PROFILE COMPANIES:

Philips, ASML, NXP, TomTom, Intel, Signify, Shimano, TNO, SnapInc.



**100+**  
**STARTUP/  
SCALE-UP  
COMPANIES**  
COMPANIES



**PEOPLE**  
ON CAMPUS  
**12,000+**



**SME 60**  
COMPANIES



**LARGE 55**  
ENTERPRISES



### PROMISING START-UPS:

Axelera AI, Euclid, FononTech, SMART Photonics, EFFECT Photonics, Carbon, Keiron, InPhocal

## Contact details

Website:

[www.hightechcampus.com](http://www.hightechcampus.com)

Contact person:

Hilde De Vocht

Phone number:

+31 (0) 40 230 5500

Email address:

[Hilde.de.vocht@hightechcampus.com](mailto:Hilde.de.vocht@hightechcampus.com)

Address of the campus:

High Tech Campus 1e (The Strip),  
5656 AE Eindhoven



# Automotive Campus Powering mobility innovations

At the heart of the Brainport region, Automotive Campus serves as the national and international hub where cutting-edge research, hands-on testing and pioneering energy solutions converge. As a Living Lab for smart mobility and energy systems, the campus offers a secure, semi-public environment where new technologies, ranging from autonomous vehicles and drones to next-generation energy infrastructure, can be tested safely before entering society. Real-life and simulated interaction between vehicles, cyclists, pedestrians and heavy-duty transport generates invaluable insights that accelerate innovation and reduce time-to-market.

## Vision and strategy

We bring bright minds, automotive experts, business, technology, and ambition together to accelerate the transition to smart, green mobility and energy.

Our mission is to turn innovation into impact by creating a place where businesses, education, and government work side by side. Connected to national, European, and international ecosystems, our strong partnerships with OEMs, startups, and research institutions are key to driving innovation.

As open innovation ecosystem, Automotive Campus is a powerhouse that fuels mobility and energy breakthroughs, strengthens start-ups and scale-ups, supports

established players, and helps every idea grow into a real-world solution.

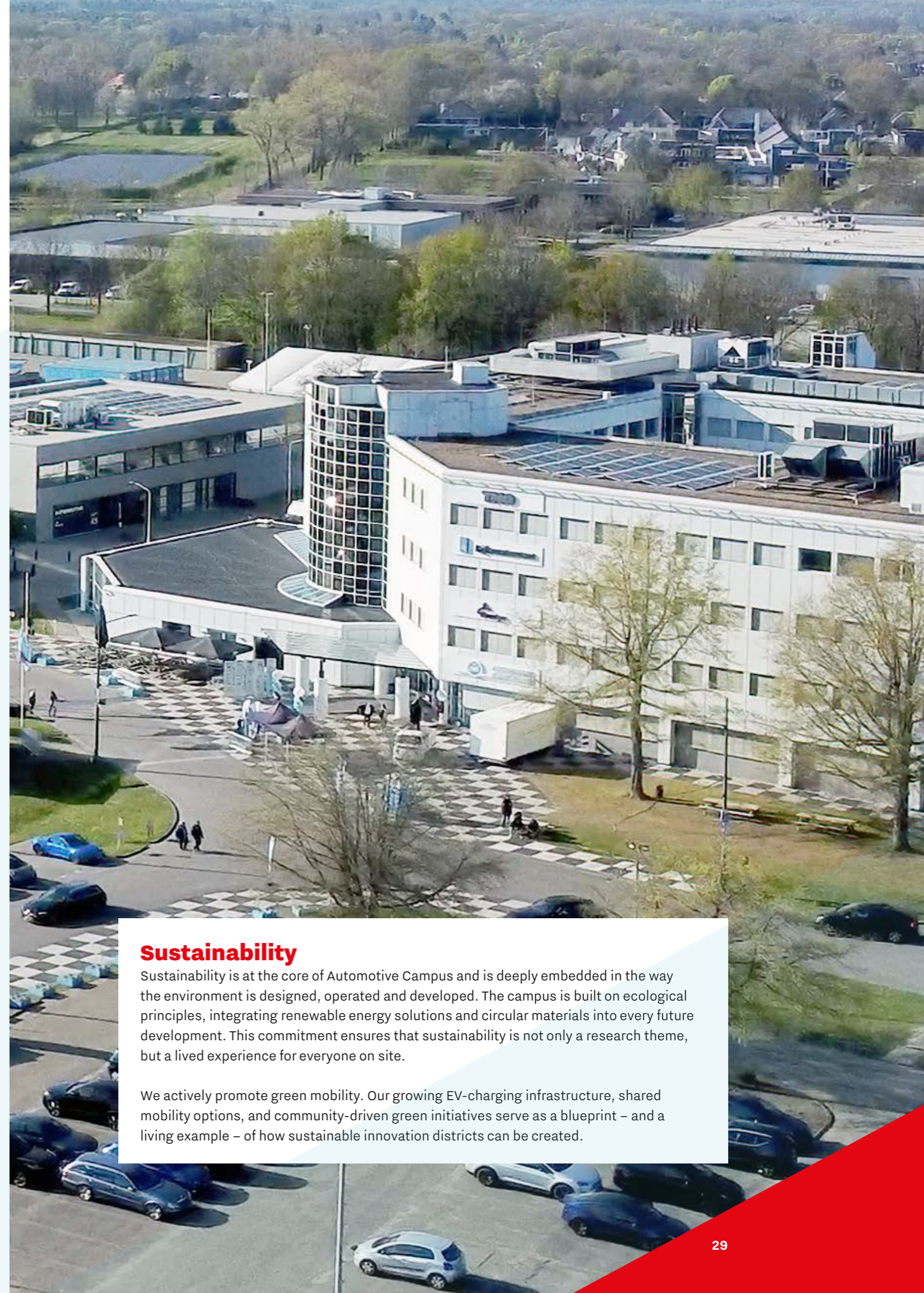
## Focus areas

- **Smart & connected mobility** - digitalisation, AI-driven vehicle systems, automated driving
- **Green mobility** - electrification, hydrogen, charging
- **Energy storage & infrastructure** - battery innovation, charging solutions, integrated energy systems
- **Data & smart environments** - sensor networks, intelligent connectivity, integrated mobility platforms
- **Circularity** - circular economy, lightweight materials, composites

## Sustainability

Sustainability is at the core of Automotive Campus and is deeply embedded in the way the environment is designed, operated and developed. The campus is built on ecological principles, integrating renewable energy solutions and circular materials into every future development. This commitment ensures that sustainability is not only a research theme, but a lived experience for everyone on site.

We actively promote green mobility. Our growing EV-charging infrastructure, shared mobility options, and community-driven green initiatives serve as a blueprint – and a living example – of how sustainable innovation districts can be created.



## Open Innovation Facilities

Automotive Campus offers access to a powerful innovation ecosystem supporting the development, testing and validation of smart, safe and sustainable mobility and energy solutions. With more than 65 R&D-driven organisations and 26 advanced test facilities on one campus, you can address technical, regulatory and market challenges across the entire development lifecycle—from early concept validation to full-scale deployment.

Within this integrated environment, you can move efficiently from digital validation and secure communication to component, powertrain, battery and full-vehicle testing. Collaboration with leading partners such as TNO, VDL Enabling Transport Solutions, TASS International and Siemens gives access to realistic, controlled and accredited test environments that would be complex and costly to replicate independently. These shared facilities help reduce development risk, validate performance earlier and accelerate time-to-market. By selecting the facilities that best match your needs, you can streamline development while maintaining high standards for safety, reliability and compliance.



## Living Lab

Automotive Campus is a living laboratory where smart, safe, and sustainable mobility becomes reality. Since the campus has been removed from the public road network, the site can be used as a controlled test environment. This unique status allows everything that is related to mobility, to be developed, tested, and validated in real-life conditions, without compromising public safety. From autonomous vehicles and smart infrastructure to drones, maritime applications, and innovative energy systems, the campus enables rapid experimentation and cross-sector collaboration. Researchers, startups, and industry partners can push boundaries, combine technologies, and move faster from concept to impact. By offering space for mobility and energy solutions that are clean, intelligent, and inclusive, Automotive Campus supports innovation for everyone. Here, tomorrow's mobility is not just imagined, it is tested, proven, and prepared.

## Quantum Communications Testbed NL

The Quantum Communications Testbed NL (QuCT NL) enables you to develop, test and validate quantum key distribution (QKD) and quantum-safe communication technologies in a real, field-deployed environment. This allows you to assess performance, robustness and security under operational conditions, accelerating the transition from prototype to deployment.

Automotive Campus connects you to a national multi-site infrastructure including Eindhoven University of Technology, High Tech Campus and WeConnect. You can evaluate hardware, networking equipment, software components and protocols across realistic large-scale networks—without having to build and manage such an infrastructure yourself. The testbed supports multiple technology readiness levels and is suitable for early-stage innovation as well as pre-commercial validation.

QuCT NL is particularly relevant for connected and autonomous mobility, smart infrastructure and high-tech automotive systems. Early validation in real-world conditions strengthens long-term security, interoperability and trust among customers, regulators and stakeholders. The testbed is open to Dutch and European partners, with international collaboration opportunities subject to review.

**Contact:**  
*Simon Rommel*  
Eindhoven University of Technology  
[s.rommel@tue.nl](mailto:s.rommel@tue.nl)

## TNO – Mobility Applied Research Quarter

The Mobility Applied Research Quarter (MARQ) provides access to TNO's open innovation centre for smart mobility and automated driving. MARQ enables you to develop, test and validate automated driving solutions in a controlled yet realistic environment, reflecting real vehicles, traffic interactions, user behaviour and broader societal impact.

By combining real-world data with digital twins, advanced simulation, hardware-in-the-loop (HIL) and software-in-the-loop (SIL) environments, and full-scale research vehicles, MARQ supports efficient testing of complex and safety-critical scenarios—especially those that are difficult, costly or unsafe to reproduce in real traffic. Continuous enrichment with real-world data improves simulation accuracy and confidence in outcomes.

The Digital Lab forms the backbone of MARQ by integrating physical testing, virtual environments and digital twins into one coherent framework. Additional capabilities include vehicle labs with open interfaces and scalable sensor suites, a Dynamic Driver-in-the-Loop Simulator for driver behaviour and HMI evaluation, and the StreetLive platform for capturing and analysing large volumes of traffic and driving data. Together, these tools help reduce risk and accelerate innovation in automated mobility.

**Contact:**  
*Renske de Jong*  
[Renske.dejong@tno.nl](mailto:Renske.dejong@tno.nl)  
[www.tno.nl/MARQ](http://www.tno.nl/MARQ)

## TNO – Innovation Center for Sustainable Powertrains

The Innovation Center for Sustainable Powertrains (ICSP) supports the development and testing of sustainable powertrain technologies for trucks, ships, generator sets and agricultural machinery. You can develop new engine concepts or adapt existing platforms for sustainable fuels and electrified solutions, supported by extensive testing and certification capabilities.

ICSP operates six engine test cells (350–1,400 kW) for testing and certification for EU Road and Non-Road Mobile Machinery applications. An altitude climate chamber enables validation from sea level up to 4,000 meters and from –45 °C to +55 °C, reducing certification risk under extreme conditions. TNO's role as a Technical Service for RDW supports an efficient route to regulatory approval.

The facility includes fuel infrastructure for hydrogen, natural gas, methanol, ethanol and conventional fuels, as well as single-cylinder research setups for early-stage development. ICSP also supports heavy-duty electrification through battery and fuel cell research. The Battery Lab offers climate chambers, battery management system (BMS) prototyping and advanced safety testing—including thermal runaway—supporting faster development while ensuring safety and compliance.

**Contact:**

Jack Bloem  
Jack.Bloem@tno.nl  
www.tno.nl/ICSP

## VDL Enabling Transport Solutions

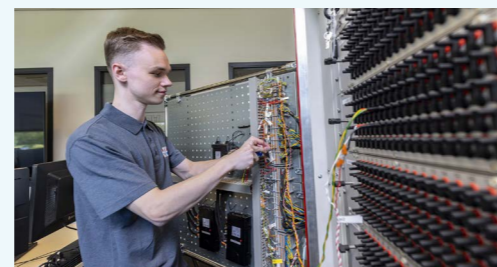
VDL Enabling Transport Solutions offers access to an independent testing and engineering centre with over 50 years of experience and 2,500 m<sup>2</sup> of dedicated testing space. The facility is compliant with ISO 9000, ISO 14000 and TISAX Level 3 standards, and includes one of the largest independent hydraulic and battery laboratories in the Benelux.

Across four testing domains, VDL ETS supports validation of performance, safety and durability at component and vehicle level. The Battery Testing Labs support cells, modules and packs across multiple chemistries, with capacities up to 1,500 V and 4,000 A under controlled climate conditions. Testing includes performance, ageing, characterisation and safety.

The Strength and Durability Lab supports mechanical loading, vibration, bending and intrusion testing. The Component Testing Lab enables testing of electric powertrains, cooling systems, battery systems, power electronics and other high-tech components under combined thermal, mechanical and electrical loads. The Vehicle Testing Lab supports full-vehicle testing, including data acquisition, commissioning, homologation and rolling road testing for vehicles up to 30 tonnes.

**Contact:**

Fred Strijbos  
f.strijbos@vdl ets.nl  
+31 (0)40 205 8000



## TASS International

**Passive Safety**

TASS International provides accredited crash and safety testing services to validate vehicles, components and safety systems efficiently and reliably. You gain access to indoor and outdoor test facilities covering automotive and non-automotive applications—from individual components and passenger cars to heavy-duty vehicles and aircraft parts. Almost any impact test can be performed under standard or customer-specific conditions, under ISO 17025 accreditation.

**Active Safety**

For ADAS and active safety development, TASS supports performance assessment of complex vehicle-integrated safety systems. The facility is accredited for Euro NCAP procedures for passenger vehicles and equipped to conduct all ADAS tests required under current UN regulations. This supports compliance validation, benchmarking and faster market introduction of competitive safety solutions.

**Contact:**

Bauke ter Steeg / Marco van de Polder  
info@tassinternational.com  
+31 888 277 200

## Knowledge Institutes

**BCC NL**

**(Battery Competence Cluster)**

National expertise center for battery technology, focusing on development, testing, safety, recycling, and sustainable energy storage.

**ACE Mobility**

**(Automotive Center of Expertise)**

Applied automotive research and education center, uniting universities and industry to develop talent, innovation, and practice-driven mobility solutions.

**Holland High Tech NL**

Top sector organization strengthening the high-tech innovation by connecting companies, researchers, and government around advanced technologies.

**Safety & Security Cluster**

An innovation cluster where Safety Region, Defense, Police, Fire Brigade, Customs, MindBase and the municipalities Helmond and Oirschot, collaborate on applied safety and security innovations.

**Summa Automotive College**

Vocational institute delivering practice-oriented education and trainings for (future) professionals in mobility, engineering, and smart manufacturing.

**Fontys Automotive Engineering**

An applied sciences program, educating automotive engineers in vehicle systems, electrification, autonomous technologies, and sustainable mobility.

**Innovam**

A training, education, and certification institute strengthening automotive and mobility professionals with hands-on programs in vehicle technology, electrification, skills development, and lifelong learning.

## Open Battery Industrialisation Centre

The Open Battery Industrialisation Centre (OBIC) is the first Dutch facility where companies can test and scale battery technologies towards industrial production. It helps bridge the gap for innovators who lack the means to prove performance, reliability and safety at scale.

In collaboration with national partners, OBIC is growing into a key hub that strengthens the Dutch and European battery ecosystem, accelerates industrialisation, and supports the energy transition.

### Contact:

André Schilt  
andre.schilt@tno.nl  
+31 (0)65 121 27 51

## Startups & Scale-ups

Automotive Campus is the premier hub for companies, investors and startups in automotive and energy solutions. They choose us as the go-to – and often only – location for their operations. The campus offers a powerful open innovation ecosystem where businesses, research institutes, and educators collaborate to develop and commercialize technologies that address global challenges. With top-tier R&D and shared facilities, investor connections, patent and IT support, and direct access to young talent from leading educational institutes, innovation moves fast here.

From established technology leaders like Delta, Durapower, Siemens TASS, TNO, VDL and Yanmar, to emerging start-ups DENS, Qarry and IM-Efficiency, to student teams from Fontys, Summa, and Eindhoven University of Technology and industry organizations like RAI Automotive Industry NL and Battery Competence Cluster: Automotive Campus

offers the know-how, infrastructure and people needed to test, validate, and scale innovation.

The R&D and test facilities – including a driving track, battery test centre, powertrain labs, climate chambers, ADAS testing centres, and hydrogen infrastructure – enable fast prototyping and real-world validation. Entrepreneurs have direct access to shared services, investor networks and subsidy expertise, ensuring that innovation doesn't stop at the concept stage, but reaches the market.

## Position your business at the heart of innovation.

Automotive Campus gives you the flexibility to locate your organization exactly as your strategy requires. Whether you want to rent or develop office, laboratory, R&D or production space, you have access to a full range of options within a proven innovation environment.

You can establish your operations in 150,000 m<sup>2</sup> of developed single- and multi-tenant facilities, including ready-to-use spaces that allow you to get started quickly. If growth is part of your roadmap, an additional 120,000 m<sup>2</sup> of land is available for new developments – enabling custom-built facilities, scale-up production or dedicated research environments.

From full-service rental solutions to greenfield plots and shared or dedicated R&D spaces, the campus provides the infrastructure, flexibility and ecosystem you need to locate, innovate and expand.



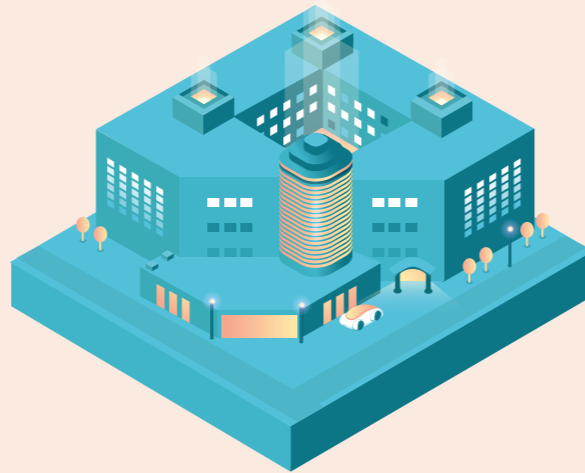
## AUTOMOTIVE CAMPUS FACTS & FIGURES

Campus area in m2:  
**300,000**

Developed area in m2:  
**180,000**

Development potential in m2:  
**120,000**

Lettable floor space in m2:  
**32,000+**



Total number  
of companies: **65+**



### High-profile companies:

Delta Electronics, Durapower, Rijkswaterstaat, Siemens-Tass International, TNO, VDL, Yanmar



### Parking facilities

600 free car parking spaces  
14 charging stations  
1 000 bicycle parking places



### Digital infrastructure

Fast, reliable data connections essential for modern R&D environments



**+900**  
RESEARCHERS,  
DEVELOPERS AND  
ENTREPRENEURS



**UNIQUE LIVING LAB**  
FOR SMART, SAFE AND  
SUSTAINABLE MOBILITY  
& ENERGY



**+700**  
STUDENTS



**3**  
EDUCATIONAL  
INSTITUTES



**20 KM**  
FROM EINDHOVEN  
INTERNATIONAL AIRPORT



AT THE HEART OF  
**BRAINPORT'S KEY**  
INNOVATION INDUSTRIES



### Shared test facilities:

Driving test track, battery test center, powertrain, climate chamber, safety & ADAS testing, hydrogen fueling, and more.

## Contact details

Website:  
[www.automotivecampus.com](http://www.automotivecampus.com)

Contact person:  
Sascha Bloemhoff, Managing Director

Email address:  
[S.Bloemhoff@automotivecampus.com](mailto:S.Bloemhoff@automotivecampus.com)

Campus address:  
Automotive Campus 30,  
5708 JZ Helmond



## Other Facilities on Campus

With a wide range of fully equipped spaces, from the cosy Meet & Greet bar and versatile workshop rooms to a spacious conference hall, auditorium and a first-floor conference area for up to 300 guests, every event can be tailored to your needs.

Everything you require – catering, technology, staging and tent building – is available on-site, ensuring seamless quality under one roof. Whether you're planning a small gathering or a dynamic innovation-driven conference: the campus enhances your event by connecting you with industry experts, speakers and relevant partners. Let us help you in shaping a powerful concept that resonates.

# Strijp

## Where Creativity, Technology and Urban innovation converge

Strijp forms the creative and urban innovation heart of Brainport Eindhoven. Developed on the former Philips industrial grounds, the district has evolved into a distinctive mixed-use campus where creativity, technology, entrepreneurship, culture and education come together. Working, living, learning and leisure are closely intertwined, creating a vibrant environment that stimulates experimentation, collaboration and new forms of value creation.

### Vision and strategy

The vision of Strijp is to foster an open, people-centred innovation ecosystem in which diverse disciplines intersect. By combining iconic industrial heritage with contemporary architecture, smart services and flexible workspaces, Strijp offers a unique setting for future-oriented innovation. Strong interaction between start-ups, scale-ups, makers, students, designers and established companies enables ideas to grow from concept to real-world impact.

Strijp consists of three complementary areas. Strijp-S functions as an international creative hotspot and urban living lab, where design, art and technology meet. Strijp-T focuses on technology, makers and scale-ups, providing space for high-tech companies and education to accelerate innovation. Strijp-R, smaller in

scale, complements the district as a high-quality residential and design area that enhances liveability.

Together, these areas form a cohesive urban campus that strengthens Brainport Eindhoven's international position as a region where creative and technological innovation reinforce each other.

### Focus Areas

- Creative industries & design
- Technology & digital innovation
- Smart and sustainable urban development
- Entrepreneurship & start-up ecosystems
- Education, culture & experience

### Sustainability – Goals & Results

Sustainability is a core principle across Strijp, with Strijp-S in particular functioning as a living lab for smart and sustainable urban solutions. Renewable energy, innovative mobility concepts and data-driven services are integrated into both daily operations and long-term development.

#### Main Objectives

Key objectives include operating on 100% re-newable energy, promoting sustainable mobility and improving quality of life through smart technologies. Electric mobility is supported by EV charging infrastructure, while smart sensors contribute to safety, environmental

monitoring and efficient district management. Smart wayfinding and intelligent use of public space enhance accessibility and user experience.

#### Remarkable Sustainability Achievements

Remarkable achievements include the implementation of renewable energy systems, participation in EU Horizon innovation projects, the deployment of smart sensor networks and the testing of urban technologies in real-life conditions. Together, these initiatives position Strijp as a practical test environment for future-proof urban districts.

Strijp-S



## Test, Lab & Open Innovation Facilities

Strijp offers a combination of creative, technological and urban test environments where experimentation, prototyping and collaboration are embedded in daily practice. Across Strijp-S and Strijp-T, facilities function as open innovation platforms connecting makers, start-ups, scale-ups, students and established companies.

### Microlab – Prototyping & Maker Facilities (Strijp-S)

Microlab is the largest co-working and maker facility in Eindhoven and a cornerstone of open innovation at Strijp-S. Shared workshops, machines and tools enable rapid prototyping, small-scale production and experimentation for makers, designers, hardware start-ups and creative technologists.

By sharing equipment and expertise, Microlab lowers barriers to innovation and stimulates cross-disciplinary collaboration, making it a living laboratory for creative technology and entrepreneurship.

### Creative & Urban Living Labs (Strijp-S)

Strijp-S functions as an urban living lab where concepts in smart cities, digital services and sustainable urban development are tested in real-life conditions. Pilot projects include smart sensors, mobility solutions, data-driven management and quality-of-life applications, enabling rapid validation and user feedback.

### Technology & Maker Facilities (Strijp-T)

Strijp-T focuses on technology-driven innovation and applied R&D. Renovated industrial buildings support product development, testing and collaboration between companies and educational institutions such as Fontys ICT, creating a continuous exchange of ideas, prototypes and applied research.

### Education-Driven Innovation Services

Educational institutions such as Fontys ICT, SintLucas and Summa College integrate real-world challenges into curricula, allowing students to work alongside companies on applied projects. These collaborations provide companies with talent and fresh perspectives while accelerating innovation.



## STRJP-S

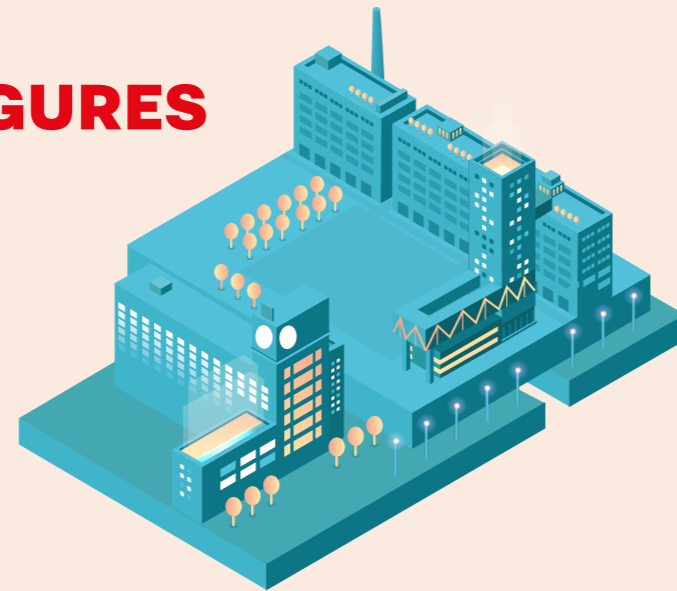
# FACTS & FIGURES

Developed area in m2:

**270,000**

Development potential in m2:

**295,000**



Total number of companies:

**1,000+**



### Leading Companies:

ABB, Bosch Security Systems, Avular, Accenture (VanBerlo), Philips Innovation Services, KMWE, Effect Photonics, CTOUCH, Draka Comteq Fibre (Prysmian Group), Additive Industries, Studyporals, Brainport Development, Fontys ICT, Settels Savenije Group.



**250+**  
**STARTUP**  
COMPANIES



**JOBS**  
ON CAMPUS  
**10,000**



**RESIDENTS**  
**2,500+**



**10 MAJOR**  
ENTERPRISES



### Knowledge institutes:

Fontys ICT, SintLucas and Summa College, with structural collaboration with Eindhoven University of Technology and TNO.

## Contact details STRJP-S

Website:  
[www.strijp-s.nl](http://www.strijp-s.nl)

Address:  
Torenallee 20, Eindhoven

Contact:  
Jill Wullems

E-mail:  
[jillwullems@volkerwessels.com](mailto:jillwullems@volkerwessels.com)

## Contact details STRJP-T

Website:  
[www.strijp-t.nl](http://www.strijp-t.nl)

Address:  
Achtseweg Zuid 151, 5651 GW Eindhoven

Contact:  
Boudie Hoogedeure

Telephone:  
+31 6 53397062

E-mail:  
[boudie@strijp-t.nl](mailto:boudie@strijp-t.nl)

### Startup & Scale-up Facilities and Programmes

Strijp offers a dynamic environment for start-ups, scale-ups and innovative companies. Strijp-S provides a creative setting with maker facilities, flexible offices and strong cultural networks that support experimentation and early-stage growth. Strijp-T offers modern workspaces, shared amenities and strong links to education, enabling technology-driven companies to scale efficiently.

The close interaction between education and business ensures continuous knowledge exchange, talent development and innovation capacity. Together, Strijp-S and Strijp-T form a unique urban innovation ecosystem that attracts talent, entrepreneurship and forward-looking business.

### Facilities & Services

#### Sports & Leisure Facilities

Facilities include Area 51 Skatepark, Natlab cinema, cultural venues and regular events supporting wellbeing, creativity and community interaction.

#### Parking Facilities

More than 1,400 parking spaces across five multi-storey car parks provide convenient access for employees, residents and visitors.

#### Digital Infrastructure

High-speed fibre-optic internet and 4G indoor coverage support creative production, digital services and technology-driven operations.

#### Housing Facilities

Approximately 2,500 residents live within the district, reinforcing the integration of living, working and leisure in a vibrant urban environment.

## Campus 5

# Brainport Industries Campus

## The future of high-tech manufacturing

Brainport Industries Campus (BIC) is being developed as a globally competitive and distinctive campus for the international high-tech manufacturing industry. Located at the heart of the Brainport region, BIC brings together OEMs, tier-1, tier-2 and tier-3 suppliers, knowledge institutes, start-ups and scale-ups in a single, integrated ecosystem where production and innovation go hand in hand.

### Vision and strategy

The vision of BIC is rooted in the belief that international competitiveness requires open innovation. By enabling companies to share knowledge, skills and experience, both temporarily and permanently, the campus strengthens collaboration across the entire value chain. Through a strong public-private partnership between the Province of Noord-Brabant, the Municipality of Eindhoven and SDK Vastgoed, BIC maximises value for companies, talent and society alike.

BIC 1, operational since 2018, is a fully modular, built-to-suit manufacturing campus and a flagship for the Brainport region. It accom-

modates high-mix, low-volume, high-value manufacturing and hosts a unique ecosystem of companies, education and innovation programmes. The coming years will see major expansion, including the further development of BIC 1 and the creation of BIC 2, an extensive new manufacturing campus for the expansion of ASML, together forming the largest campus expansion in the Netherlands of over 680.000 m<sup>2</sup> GFA.

Innovation at Brainport Industries Campus focuses on future-proof high-tech manufacturing and deep-tech development. Across these domains, BIC accelerates smart industry

solutions such as robotics, digital factories, additive manufacturing, advanced inspection and emerging technologies in semicon, photonics and quantum manufacturing, strengthening the Netherlands' leadership in advanced manufacturing.

### Focus areas

- Deep-tech manufacturing
- Remanufacturing and reuse (harvesting)
- Defence-related manufacturing technologies

### Sustainability goals & results

Sustainability is an integral part of the development and operation of Brainport Industries Campus. The campus actively contributes to reducing carbon emissions while enhancing its ecological footprint, embedding sustainability into both industrial processes and the built environment.

### Main objectives

A key objective is to offer future-proof manufacturing facilities that combine industrial scalability with responsible resource use. All factories at BIC are

guaranteed access to the energy grid, enabling reliable and sustainable operations for high-tech manufacturing companies. The campus follows a modular building philosophy, allowing flexibility, long-term reuse and minimal waste throughout the lifecycle of its buildings.

### Remarkable sustainability achievements

Remarkable sustainability achievements include the installation of more than 8,800 solar panels, the elimination of natural gas use across campus facilities, and a clear zero-waste ambition. Buildings are constructed using recyclable materials, while the surrounding green environment is actively conserved and integrated into the campus layout. Electric mobility is supported through extensive charging facilities, encouraging cleaner transport options for employees and visitors.

Through these measures, Brainport Industries Campus demonstrates how large-scale industrial development can align with environmental responsibility, setting a benchmark for sustainable high-tech manufacturing campuses in Europe.

## Open innovation services & field labs

### AI-MATTERS

AI MATTERS is a network of testing and experimentation facilities dedicated to the manufacturing sector with the goal to accelerate the adoption of trustworthy AI in manufacturing. The Dutch node, rooted in the Brainport region, unites Brainport Industries, TNO and Eindhoven University of Technology (TU/e). Together they support both manufacturing companies and AI technology providers with access to expertise, infrastructures, and guidance to validate, demonstrate and scale AI solutions in real industrial environments. By linking industrial demand with cutting-edge AI technologies, the Dutch AI MATTERS partners strengthen innovation capacity and the global competitiveness of Europe's manufacturing ecosystem.

AI-MATTERS is co-funded by the European Union. Views and opinions expressed are however those of the author(s) only and do not necessarily reflect those of the European Union or European Health and Digital Executive Agency (HADEA). Neither the European Union nor HaDEA can be held responsible for them.

### NXTGEN Autonomous Factory

#### NXTGen High Tech Autonomous Factory

The Autonomous Factory project focuses on the development and implementation of process optimization in a high-tech production environment; highly complex, in low volumes.

The more than twenty partners involved in the project are working on several generic topics, namely: the use of robots and cobots, flexible production, OEE (effectiveness of existing production equipment), production planning, and assembly.

Ultimately, the entire production process must become Smart: Smart Manufacturing, Smart

Working, and Smart System Engineering. Robotization, new production and assembly technology, flexible and digitized logistics are essential elements, but operating support systems, education, and training also play a significant role. This leads to the radical "zero" ambitions of zero defects, zero delays, zero programming, zero surprises, and zero waste, which also contribute to lifecycle management and circularity.

#### NXTGEN Smart Networks

With NxtGen Hightech, significant investments will be made in the development of the next generation of high-tech equipment in the coming years. Brainport Industries is involved in the Autonomous Factory and Smart Supply Network projects, which specifically target the high-tech manufacturing industry, a strong area in the Southeast Brabant region. In this article, we delve deeper into the Smart Supply Network project.

Within the Smart Supply Network project, we will be working on deepening and scaling up the Smart Connected Supplier Network (SCSN). Matthijs Punter, senior researcher at TNO data ecosystems and involved in the project: "The Smart Connected Supplier Network is a long-running initiative from Brainport Industries, within which manufacturing companies are working on the digital exchange of information within the supply chain, enabling them to share data more easily, quickly, and reliably."

### CBPS

The Circular Business Program Semicon enables the participants to work on a sustainability program for the semiconductor industry. In addition to the initiators Brainport Industries, ImpactX, and the Brabant Development Agency (BOM), the companies ASML, VDL ETG, Prodrive Technologies, Neways, KMWE, ERIKS, HQ Pack, Meilink, and Aalberts Advanced Mechatronics are contributing their knowledge, experience, and financial resources. Knowledge partners such as TNO, TU/e, Eindhoven Engine, and Fontys are also contributing research and expertise.

The coalition's circular ambitions are being shaped into concrete projects. For example, a fault analysis and repair center is being established where companies can examine and repair machine components. A digital tool is also being developed that provides insight into which components can be reused. Furthermore, the parties are developing a plan and tools to help companies implement circular practices more easily.

The coalition also aims to grow and broaden its scope by inviting more OEMs and suppliers to join.

### Factory of the Future Experience Center

Located at the Brainport Industries Campus, the Experience Center helps companies prepare for the factory of the future. It offers inspiration through knowledge sessions and demonstrations, and enables collaboration with experts in robotics, cobots, AI and 3D vision. Together with a strong partner network, companies can test and develop use cases, select the right technologies, and build flexible, partly robotized production processes. The Center supports the realization and evaluation of proof-of-concepts, making costs, benefits and impact transparent while sharing best practices. Students also participate through projects, gaining hands-on experience for the future.

### EDIH South Netherlands

EDIH South Netherlands ('EDIH-SNL') supports the SME manufacturing industry in Zeeland, North Brabant and Limburg with their digitization issues. The focus of 'Hub Zuid' is on the agrifood, semicon, automotive, process industry, medical systems and mechanical engineering sectors. To enable SMEs from these sectors, including the supply industry, to take concrete steps forward, EDIH Zuid-Nederland provides the right support for each sector in the form of quick scans, advice, coaching, field labs and workshops. EDIH Zuid-Nederland is one of more than 200 'hubs'

that make up the European Digital Innovation network (EDIHs) throughout Europe.

### SCSN

Data exchange between companies should be fast, easy, affordable, and secure. The Smart Connected Supplier Network (SCSN) offers the smart solution. SCSN automatically exchanges data between customers and suppliers through a direct connection to your own ERP system. This results in satisfied customers for suppliers, and fast, reliable suppliers for manufacturers.

SCSN automates the processing of essential business documents directly within your ERP system. A secure network ensures that all connected companies can exchange data reliably. For example, sales orders, invoices, packing slips, bills of materials, and supply chain data can be shared easily and securely—with just one connection, directly linked to all participants.



## BRAINPORT INDUSTRIES CAMPUS

# FACTS & FIGURES

Area in m2:

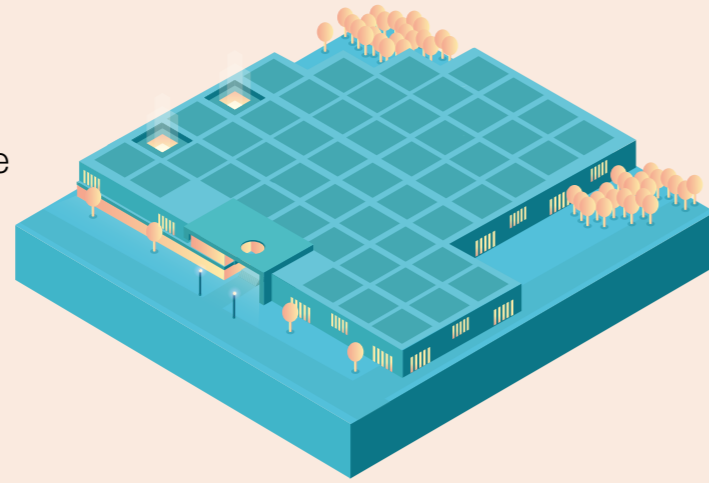
**330,000**

Development space  
in m2

**225,000**

+ Area created  
by ASML in m2

**428,000**



**Total number  
of companies:** **50** AND GROWING



### High profile companies:

ASML, VDL, KMWE, Fluke, Anteryon, Yaskawa, Hexagon, META, K3D



**5**  
**STARTUP**  
COMPANIES



**JOBS**  
ON CAMPUS  
**1,750**

EXPANDING WITH 25,000  
OVER THE COMING YEARS



**5** **LARGE**  
ENTERPRISES  
+ GROWING



### Shared R&D facilities:

Brainport Industries Campus is an active partner in and host of the Innovation Program 'Factory of the Future'. This program was drafted by and in collaboration with 75 companies, knowledge institutes, educators, and sector associations in close cooperation with the Province of Noord-Brabant, Brainport Industries and the Brabant Development Agency (BOM). The aim of the program is to jointly develop faster and smarter production processes and sharing (innovation) facilities, leading to lower cost, higher quality and above all a faster time to market of innovative products. The different topics of the innovation program are divided in multiple fieldlabs, each of them focusses on a different smart industry theme, e.g.:

- Flexible Manufacturing
- Brainport Digital Factory
- Smart Connected Supplier Network
- Multi-material 3D printing
- 3D metal printing
- Future Manufacturing Skills
- Cyber Security
- Artificial Intelligence
- Advanced Manufacturing Logistics

### Startup/scale-up facilities & programmes

Brainport Industries Campus offers a powerful environment for start-ups and scale-ups operating in high-tech and deep-tech manufacturing. Designed to support the factories of the future, the campus provides flexible, modular production and innovation spaces that allow companies to grow without the need for heavy upfront investments.

Entrepreneurs can access smart work units starting from 350 m<sup>2</sup>, combined with office units from 200 m<sup>2</sup>. Facilities include high-tech production areas, cleanrooms, laboratories, storage, showrooms or integrated combinations thereof. With clear heights of up to 13 metres, the campus supports a wide range of advanced manufacturing activities. This flexibility enables scale-ups and knowledge institutes to benefit from state-of-the-art infrastructure while focusing on product development and market growth.

Shared facilities are directly connected to BIC's iconic atrium, where large glass facades provide maximum visibility into production and collaboration spaces. This openness turns manufacturing into a showcase, offering companies a unique shop window for customers,

partners and talent, while still allowing areas to be screened when required.

Innovation is further accelerated through shared R&D facilities and programmes such as the Factory of the Future initiative. Developed with more than 75 companies, knowledge institutes and educational partners, this programme focuses on faster, smarter and more efficient production. Multiple field labs address themes including flexible manufacturing, digital factories, multi-material and metal 3D printing, artificial intelligence, cybersecurity, logistics and future manufacturing skills.

Educational institutions such as Summa College, Fontys and Avans are tenants on campus, with TU/e, TNO and Fraunhofer actively involved as partners and users. This close connection between education, research and industry ensures a strong talent pipeline and continuous innovation.

Supported by shared services, innovation programmes and a vibrant campus community, Brainport Industries Campus enables start-ups and scale-ups to test, pilot and scale manufacturing technologies, transforming ideas into industrial reality within a globally competitive ecosystem.





## Sports and leisure facilities

Various sports and social activities are organised on a weekly, monthly, and annual basis, to encourage social interaction and collaboration at the campus and to contribute to a healthy lifestyle of our campus residents. Think of bootcamp training, walking, running and mountain bike trails, but also Friday afternoon drinks, Sinterklaas and New Year's celebrations, but also technology-related meetings about specific innovations that are relevant to the high-tech manufacturing industry.



## Parking facilities

The car park of Brainport Industries Campus offers 1,600 parking spaces for cars and bikes, including parking spaces for the disabled. The park also facilitates charging points for electric cars and car/scooter sharing solutions.



## Digital infrastructure

- Free Wifi available for visitors,
- Mobile indoor coverage,
- Fiber optic internet connection available for campus tenants



## Distance to Eindhoven Airport: 1KM

In minutes: 10 min walking distance.  
Direct highway access and connected to high quality public transportation.

## Services of park management

Brainport Industries Campus management facilitates and encourages open innovation and collaboration within the high-tech manufacturing industry by creating the right setting. It assumes an explicit role in shaping and promoting the ecosystem for Brainport Industries Campus by facilitating the necessary social interaction and coming up with ideas for the core business of its tenants and customers.

As such, it is more than just a management and retained organization of the campus. All forms of services provided by campus management and its partners focus on the users and continuous attention is paid to the environment, sustainability and (information) security. The service provision process is structured in such a way that it facilitates the customer process to

the greatest possible extent and causes minimum disruption. Contact with users is characterized by mutual transparency and openness.

Campus management and its partners work closely together to offer the best comprehensive service. Together, they are responsible for developing the ecosystem, building management and the infrastructure, all facility services, the supply of water and energy, the supply of logistical services, as well as consumptive services for the tenants.

## Development possibilities:

The coming years, both Brainport Industries Campus and semicon powerhouse ASML will invest on campus, adding a more than 450.000 m2 in production, research, innovation and education areas.

## Contact details

**Website:**  
[www.brainportindustriescampus.com](http://www.brainportindustriescampus.com)

**Contact person:**  
Huub Smulders

**Phone number:**  
+31 (0)85 077 7677

**Email address:**  
[secretariaat@brainportindustriescampus.com](mailto:secretariaat@brainportindustriescampus.com)

**Address:**  
BIC 1, 5657 BX Eindhoven







# BRAINPORT EINDHOVEN

[www.brainporteindhoven.com](http://www.brainporteindhoven.com)  
[invest@brainportdevelopment.nl](mailto:invest@brainportdevelopment.nl)

Follow us on:

 Brainport Eindhoven

 Brainport Eindhoven